

CENTRAL INSTITUTE FOR SUPERVISING AND TESTING IN AGRICULTURE (CISTA)



It performs administrative proceedings, expert evaluations, testing, control and monitoring activities in the areas of:

FERTILISERS AND SOIL

PLANT PROTECTION PRODUCTS

FEED

PERENNIAL PLANTS

SEED AND PLANTING MATERIAL






PLANT VARIETIES

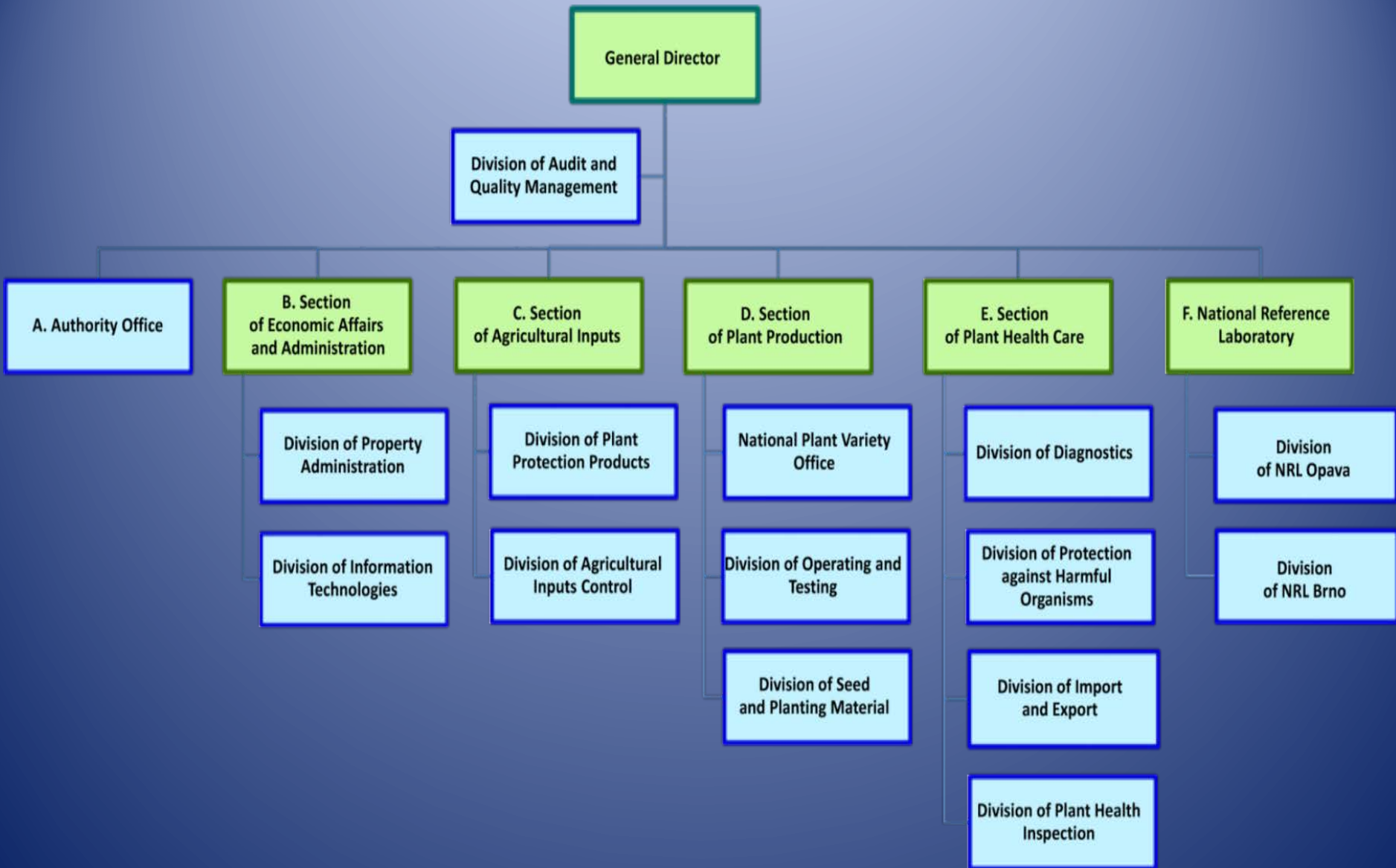
ORGANIC AGRICULTURE

PLANT HEALTH CARE

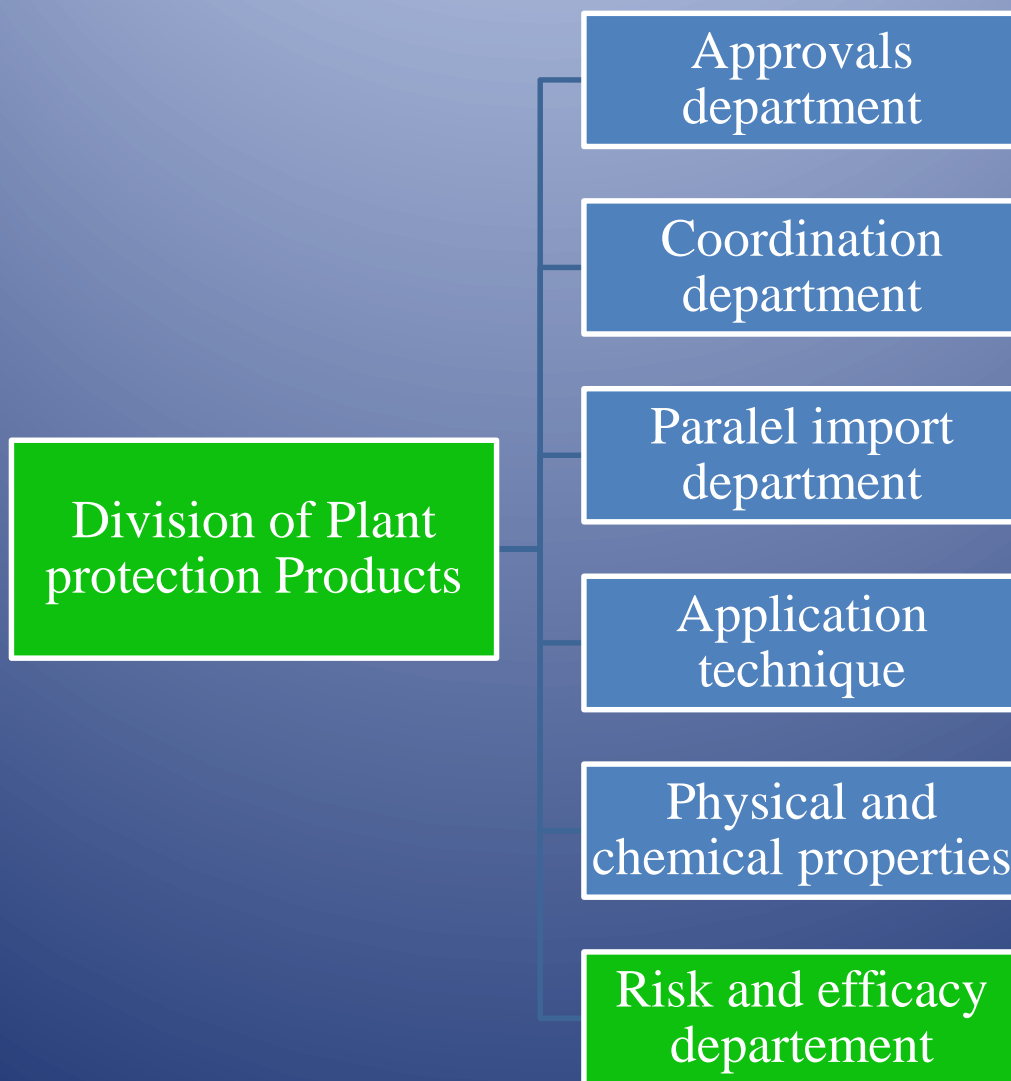
LOCATION OF WORKPLACES OF THE INSTITUTE



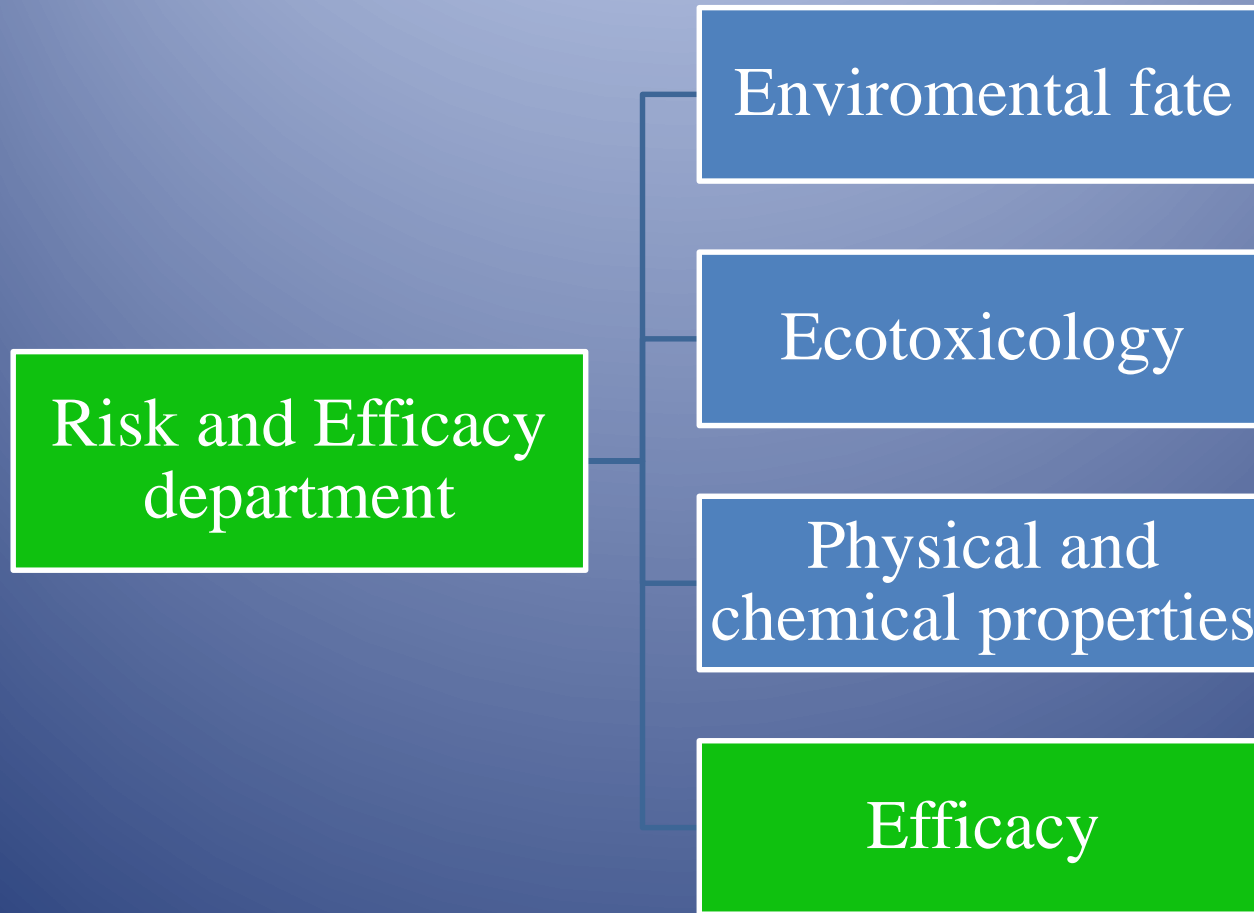
-  Headquarters
-  Agricultural inspection
-  Experimental station
-  Grassland Management Station
-  Regional workplace
-  Laboratories
-  Public Marking Hall for Hops
-  Biological experimental station



Division of Plant Protection products



Risk and efficacy department



Human toxicology evaluation is done in another institute - *The National Institute of Public Health (NIPH)*